

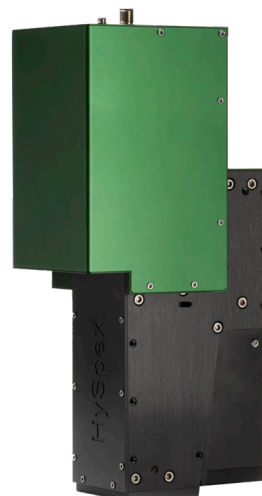
HySpex Baldur S-384 N

Designed to be fast, flexible, robust and repeatable, HySpex offers the Baldur line of industrial cameras.

Baldur S-384 N covers the spectral range from 960-2500nm.

All Baldur cameras are Nyquist cameras giving a spectral resolution of 2 spectral bands while capturing 4 times as much light as the classic systems. To ensure that the most information per frame rate is provided, the spectral resolution is kept very close to 2 bands.

Additionally, the spatial resolution of Baldur S-384 N is better than 1.3 pixels, yielding a very sharp camera.



On-scene scan speed for various foreoptics options

Foreoptics type	Working distance [mm] from camera to object	Field of view	Pixel size	Max. speed*	Max. speed**
Microscope	27,4	6.6°/20.1 mm	0.052 mm	0.02 m/s	0.04 m/s
30 cm	204,8	17.8°/99.5 mm	0.259 mm	0.10 m/s	0.20 m/s
1.0 m	888,3	16.7°/296.9 mm	0.773 mm	0.30 m/s	0.61 m/s
44 cm / 40°	428,3	38.1°/335.1 mm	0.873 mm	0.34 m/s	0.69 m/s
1.0 m / 40°	989,8	40°/761.8 mm	1.984 mm	0.78 m/s	1.57 m/s
1.9 m / 40°	1844,3	40°/1382.7 mm	3.601 mm	1.42 m/s	2.84 m/s

*With 288 bands and square pixels.

**With 144 bands and square pixels.

MAIN SPECIFICATIONS	
Spectral range	960-2500 nm
Spectral bands	288
Max. speed*	395 fps
Spectral sampling	5.45 nm
F-number	f/2
Spectral FWHM	<2 bands
Spatial FWHM	<1.3 pixels
Spatial pixels	384
FOV	16.1° / 30.8°
Bit resolution	16 bit
Noise floor	LG: 250 e- HG: 150 e-
Peak SNR	LG: 5200 HG: 2800
Dynamic range	LG: >1100 HG: >640
ROI*	All bands can be selected/deselected individually
External trigger options	LVDS, 3.3V / 5V TTL
Dimensions (l-w-h)	368 - 131 - 175 mm

*Reducing the number of spectral channels with ROI will proportionally increase the maximum frame rate