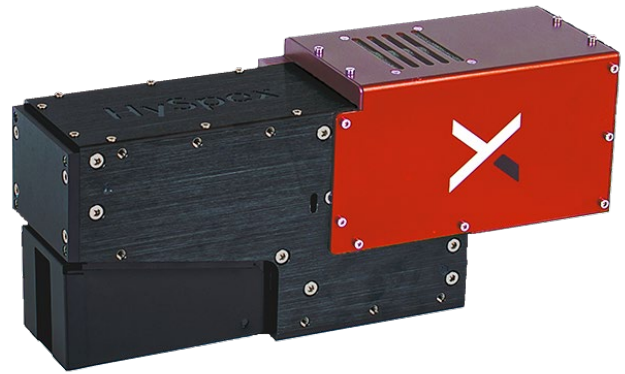


HySpex SWIR-640

HySpex SWIR-640 offers high spatial resolution by using a unique MCT sensor. The FPA is cooled to 150K using a sterling cooler, yielding low background noise, high dynamic range, and exceptional SNR levels. The camera offers an aberration-corrected optical system with high optical throughput (f/2.0), the data quality, sensitivity, and resolution is truly state of the art.

A wide range of close-up lenses allows the use of the camera at working distances ranging from a few centimeters, with a spatial resolution of 32 μm , to infinity for e.g. airborne remote sensing.



MAIN SPECIFICATIONS	
Spectral range	960-2500 nm
Spatial pixels	640
Spectral channels	360
Spectral sampling	4.38 nm
FOV*	16°
Pixel FOV across/along*	0.44/0.44 mrad
Bit resolution	16 bit
Noise floor	80 e-
Dynamic range	7500
Peak SNR (at full resolution)	> 800
Max speed (at full resolution)	140 fps
Power consumption	10 W
Dimensions (l-w-h)	36 - 11- 15 cm
Weight	4.1 kg
Camera Interface	CameraLink

*Can be doubled with FOV expander